



North Shore Health Department Public Briefing

December 29th, 2020 as of 3:30 p.m.

Healthy MKE – A Resource for COVID-19 Vaccine Information: healthymke.com



New Wisconsin DHS COVID-19 Vaccine Data Page: [Click Here](#)

If you recently attended a holiday gathering, are experiencing COVID-19 symptoms, or were exposed to someone with COVID-19, visit testupmke.com to find a testing site.

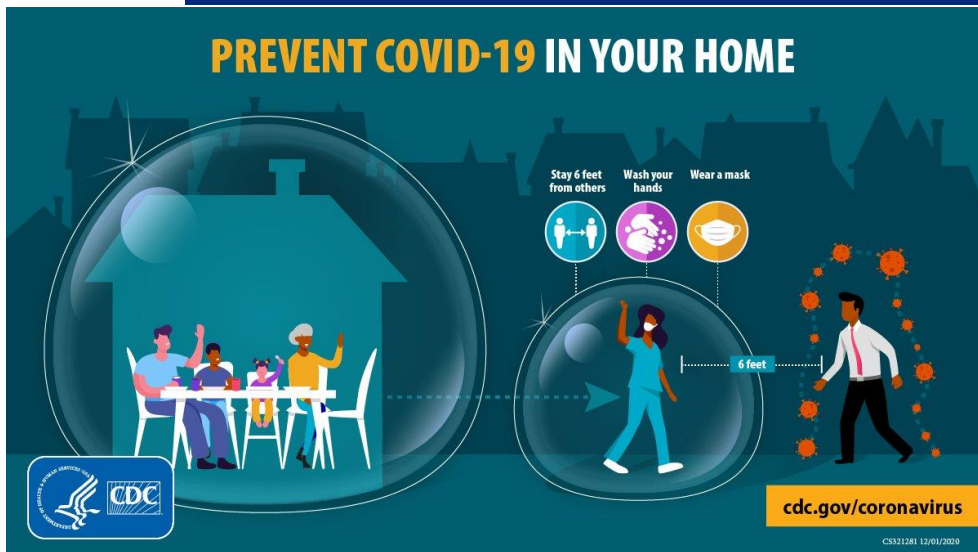


Wisconsin COVID-19: At-Home Collection Kits: [COVID-19: At-Home Collection Kit | Wisconsin Department of Health Services](#)

Prevent COVID-19 In Your Home:

COVID-19 can spread anywhere, even places where you feel safe, like your home. If one person in your household gets COVID-19, it can spread to others. If you go out, wear a mask, stay 6 feet from others, avoid crowds, wash your hands.

CDC Website: [Protect your Home from COVID-19 | CDC](https://www.cdc.gov/coronavirus/2019-ncov/protect-your-home.html)



COVID-19 Cases to Date

North Shore (Bayside, Brown Deer, Fox Point, Glendale, River Hills, Shorewood & Whitefish Bay) - as of December 29th Changes from 12/28. This data is also available on our [website](#).

4,099 Cumulative Confirmed Cases* (+26)

**Confirmed with PCR test.*

346 active cases (-28)

3,700 recovered cases (+53)

53 deaths (+1)

255 Antigen Positives (+0)**

***Positive with rapid-antigen test.*

34 active antigen positives

221 recovered cases

Cumulative Confirmed Cases by Community

Bayside	291
Brown Deer	895
Fox Point	345
Glendale	1064
River Hills	98
Shorewood	690
Whitefish Bay	716

The antigen positives may be confirmed with a PCR test – if the PCR test is positive, they are added to the confirmed cases. If the PCR test is negative, they are no longer considered antigen positive.

Milwaukee County (as of December 29th – changes from 12/28)

83,676 Cumulative Confirmed Cases (+338)

408,413 negatives (+699)

978 deaths (+23)

Wisconsin (as of December 29th – changes reported by WI DHS)

474,537 Cumulative Confirmed Cases (+2,384)

28,761 active cases

2,340,164 negatives (+3,633)

4,783 deaths (+72)

21,081 ever hospitalized (+170) Percent ever hospitalized = 4.4%

More Wisconsin COVID-19 data: [Click Here](#)