



North Shore Health Department Public Briefing

December 14th, 2020 as of 3:30 p.m.

Information on COVID-19 Testing in Milwaukee County - [TestUpMKE](#)



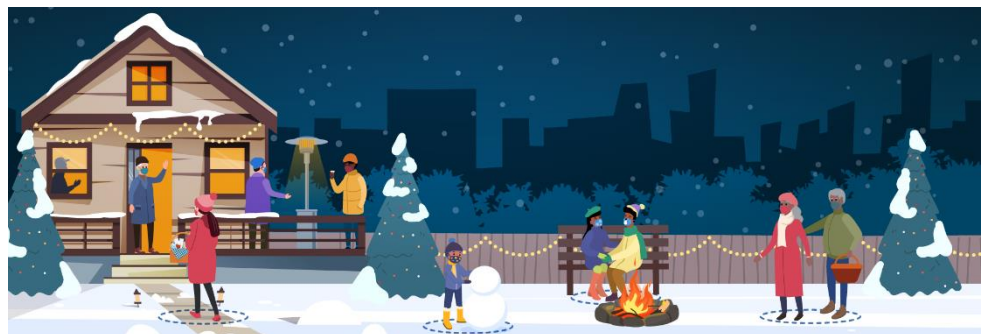
COVID-19 Vaccine FAQs: Wondering if the vaccine is recommended if you already had COVID-19? Or if you need to wear a mask after receiving the two doses of the vaccine? Check out the CDC's FAQs page: [Frequently Asked Questions about COVID-19 Vaccination | CDC](#)

COVID-19 and Winter Holidays: [CDC Website](#)

The safest way to celebrate winter holidays is to celebrate at home with the people you live with. Staying home is the best way to protect yourself and others, as traveling and/or gathering with others increases the risk of spreading COVID-19 or the flu.

Ways we can all make winter holidays safer:

- Wear a mask - Wear your mask over your nose and mouth, secure it under your chin, and make sure it fits snugly against the sides of your face.
- Stay at least 6 feet away from others who do not live with you. Indoors or outdoors, you are more likely to get or spread COVID-19 when you are in close contact with others for a total of 15 minutes or more over a 24-hour period.
- Avoid crowds and indoors spaces that do not offer fresh air from the outdoors as much as possible. If indoors, bring in fresh air by opening windows and doors, if possible.
- Wash hands often with soap and water for at least 20 seconds, especially after you have been in a public place, after blowing your nose, coughing, or sneezing and before eating.
- Get a flu shot as soon as possible – [vaccinefinder.org](#)



COVID-19 Cases to Date

North Shore (Bayside, Brown Deer, Fox Point, Glendale, River Hills, Shorewood & Whitefish Bay) - as of December 14th Changes from 12/11. This data is also available on our [website](#).

3,786 Cumulative Confirmed Cases* (+91)

**Confirmed with PCR test.*

505 active cases (+41)

3,233 recovered cases (+50)

48 deaths (+0)

191 Antigen Positives (+4)**

***Positive with rapid-antigen test.*

40 active antigen positives

151 recovered cases

Cumulative Confirmed Cases by Community

Bayside	269
Brown Deer	822
Fox Point	327
Glendale	991
River Hills	95
Shorewood	622
Whitefish Bay	660

The antigen positives may be confirmed with a PCR test – if the PCR test is positive, they are added to the confirmed cases. If the PCR test is negative, they are no longer considered antigen positive.

Milwaukee County (as of December 14th – changes from 12/13)

77,545 Cumulative Confirmed Cases (+427)

393,488 negatives (+931)

816 deaths (+1)

Wisconsin (as of December 14th – changes reported by WI DHS)

438,895 Cumulative Confirmed Cases (+2,122)

44,749 active cases

2,255,994 negatives (+5,228)

4,068 deaths (+12)

19,326 ever hospitalized (+) Percent ever hospitalized = 4.4%

More Wisconsin COVID-19 data: [Click Here](#)