



NORTH SHORE COMMUNITY CONVERSATIONS

WELCOME!





NORTH SHORE HEALTH DEPARTMENT

*Serving the communities of Bayside, Brown Deer, Fox Point,
Glendale, River Hills, Shorewood, and Whitefish Bay in Wisconsin*

Mission: In partnership with the communities we serve, the North Shore Health Department assures, promotes, and protects the health and safety of the people in the North Shore.

Vision: The North Shore Health Department will collaborate with residents and community partners to optimize health and safety for people who live, work, and spend time in the North Shore.

Contact Us:



414-371-2980



www.nshealthdept.org



ns hd@nshealthdept.org





NORTH SHORE
HEALTH DEPARTMENT

WHAT IS PUBLIC HEALTH?

Working together to protect and promote health and well-being through preventative and proactive actions - doing so with health equity at the forefront.



PUBLIC HEALTH THROUGH THE YEARS

Mid 1800s



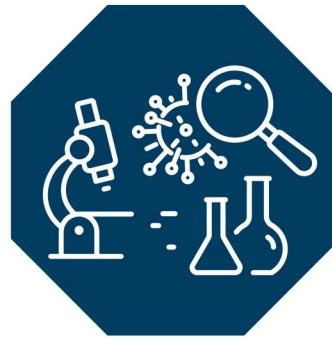
FAITH-BASED

Late 1800s



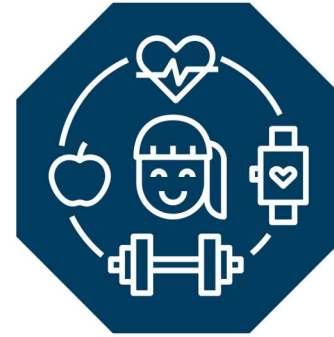
WARTIME

Early 1900s



GERM THEORY

Late 1970s



BEHAVIOR
CHANGE

Today



SDOH & HEALTH
EQUITY

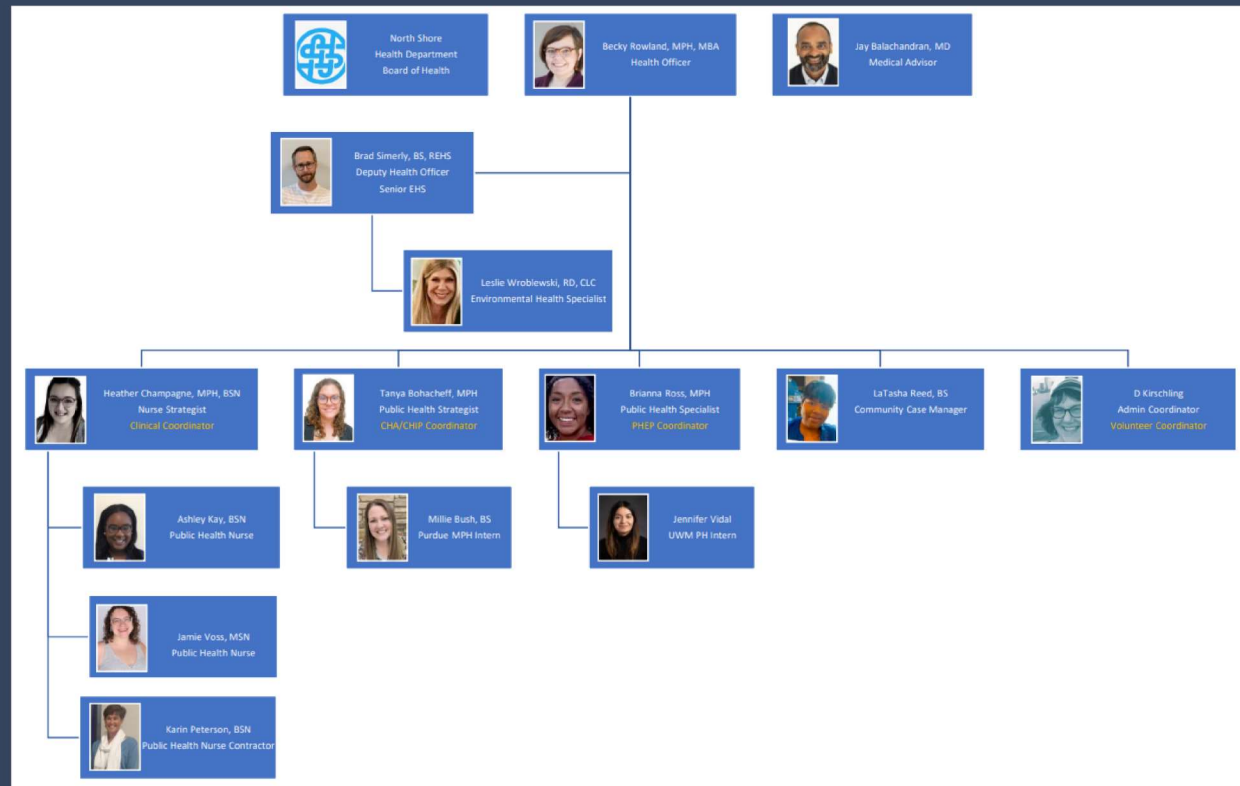
SCOPE & CAPACITY

Level III Health Department

- 11 total staff
- Monday-Friday, 8am-4:30pm (40 hours per week)

Services and Programs

- Maternal and Child Health
- Environmental Health
- Injury Prevention and Harm Reduction
- Communicable Disease Prevention and Control
- Chronic Disease Prevention, Physical Activity and Nutrition
- Mental Health and Wellbeing
- Public Health Emergency Preparedness
- Community Outreach, Engagement and Public Health Education

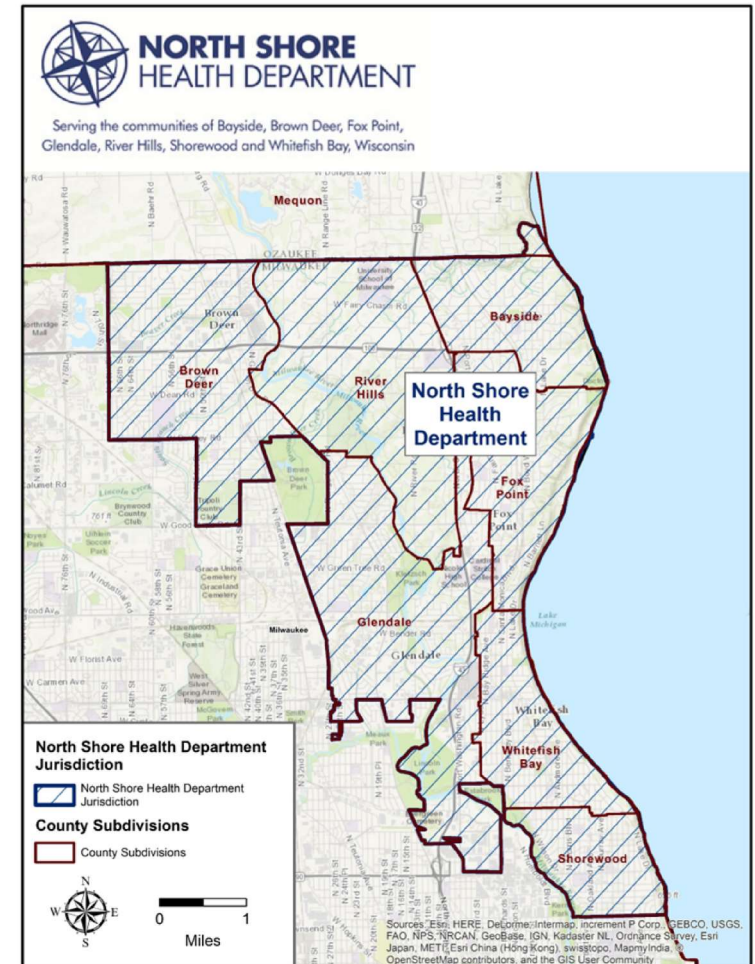


WHO DO WE SERVE?

Local Health Department (LHD) – consolidated with 7 municipalities:

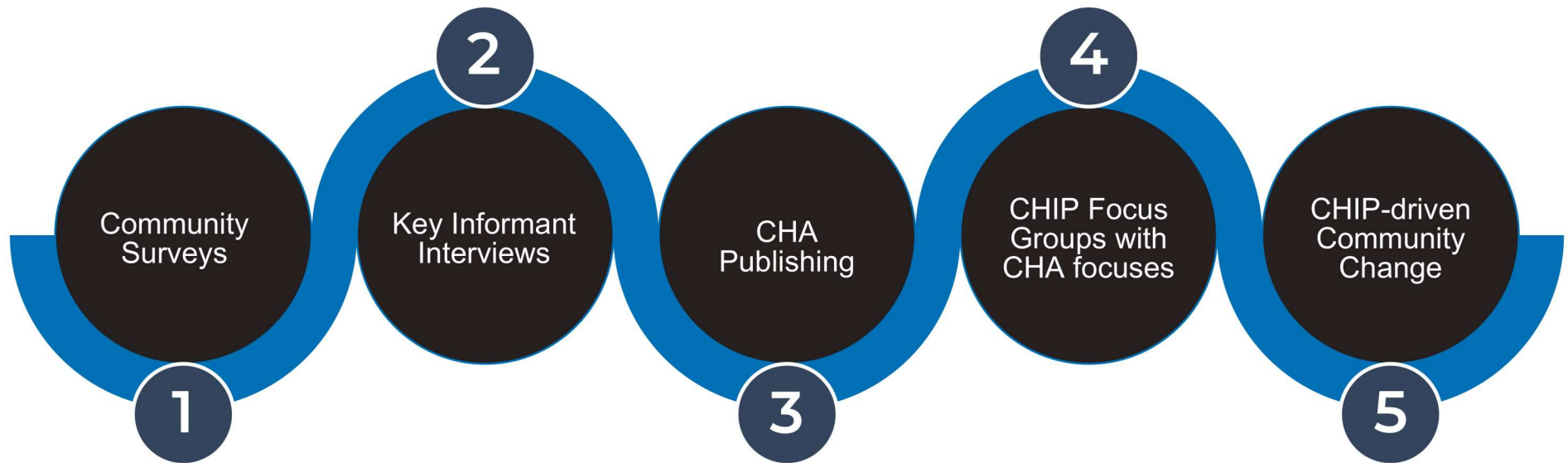
1. Brown Deer
2. River Hills
3. Glendale
4. Whitefish Bay
5. Bayside
6. Fox Point
7. Shorewood

About 68,000 folks!



PLANNING PROCESS 2023-2024

The CHIP guides the work.



COMMUNITY HEALTH IMPROVEMENT PLANS (CHIP)

A CHIP is a roadmap that a community creates to make itself healthier (guides health department activities)

Uses the CHA to guide the process.

- Assess your community's health
- Set clear goals
- Plan actions
- Allocate resources
- Monitor progress and celebrate success

Community Driven and Focused

- Community members are key
- Results from the CHIP drive changes



WORLD CAFE STYLE

- What is World Cafe Style?
 - Inspired by cozy café settings
 - Engage in multiple focused discussions
 - Guided by important questions
 - Share thoughts and ideas
- 4 Group Tables
 - Mental Health
 - Environmental Health
 - Healthy Living
 - Community Perspectives
- Format
 - 20 Minutes per Table
 - 5ish People per Table

WHAT TO EXPECT TODAY

- Ground Rules
 - Remain muted unless speaking, utilize “hand raise” feature
 - Cameras on, if possible
 - Be respectful, including respectful of time
 - Introduce with first names only
- Body language and neutral responses from facilitators
- In the essence of time, facilitators may stop conversation; however, please write additional ideas down for later

THANK YOU!

Questions before we start?





NORTH SHORE HEALTH DEPARTMENT

*Serving the communities of Bayside, Brown Deer, Fox Point,
Glendale, River Hills, Shorewood, and Whitefish Bay in Wisconsin*

**PLEASE COMPLETE THE POST-CONVERSATIONS SURVEY
AND BE ENTERED TO WIN A GIFT CARD!**

Scan Survey QR Code



Contact Us:



414-371-2980



www.nshealthdept.org



nshd@nshealthdept.org