



North Shore Health Department Board of Health

May 18, 2023



Agenda

- Approval of February 23rd, 2023 Minutes
 - Approval of the Annual Report
 - Requested approval of updated NSHD Board of Health By Laws
 - Brief presentation of the COOP
 - Report out on National Public Health Week Department Activities
 - Presentation of the Community Health Assessment
 - Public Health Preparedness Update
 - Program Updates
 - Workforce Development Updates
 - Building Updates
 - 140 Prep—anyone interested in participating
 - Intern Update
 - Presentation by Lydia Korthals, Public Health Intern
 - Status update on Health Officer 2023 Goals
-

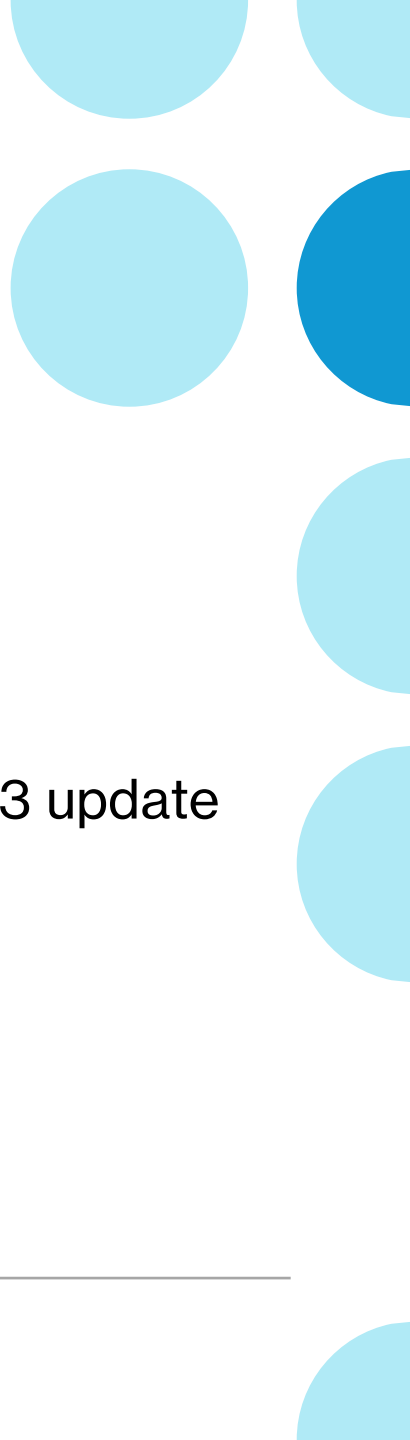
Requests for Motions

Approval

- Feb 2023 Board of Health Meeting Minutes

Adoption

- NSHD 2022 Annual Report
- Board of Health By Laws, 2023 update



NSHD Continuity of Operations Plan (COOP)

A COOP establishes policy and guidance to ensure that essential functions for an agency are continued when a manmade, natural, or technological emergency disrupts or threatens to disrupt normal operations.

The COOP enables NSHD to operate with a significantly reduced workforce and diminished availability of resources, and to operate from an alternate work site should the primary facility become uninhabitable.

COOPs are activated when:

- An incident occurs requiring relocation of any essential functions (building compromised)
 - Essential functions are significantly compromised
 - Staffing levels are significantly compromised (i.e., influenza pandemic)
 - Key partners are not available for normal operations
 - Essential systems are unavailable (power, water, information technology)
-

- Includes an initial response plan to delegate authority, maintain essential functions, activate, notify, and/or relocate service, communicate changes, and stand-up alternative work sites.
- Contains a set of 14 highly detailed worksheets that organize and navigate the changes in operations.



National Public Health Week

April 4-April 9

Themes by Day:

- Community
- Violence Prevention
- Reproductive & Sexual Health
- Mental Health
- Rural Health
- Accessibility
- Food and Nutrition

How We Celebrated at NSHD:

- Started an internal Free Little Library
- Hygiene Drive
- Staff Appreciation Lunch
- Distributed gun locks and condoms all around the NS
- Volunteered as a department at the Red Cross
- Completed a self-study of LGTB inclusive professional learning
- Wrote our legislators
- Played games together
- Created a variety of social media posts throughout the week aligned with the daily themes

North Shore Community Health Assessment (CHA) updates

Our CHA report is complete!



Going live on our website tomorrow.

NORTH SHORE COMMUNITY HEALTH ASSESSMENT

2022-2026

OUR APPROACH TO THE COMMUNITY HEALTH ASSESSMENT

1 Secondary Data

2 Community Survey



When you see this graphic in the CHA, primary data from our community survey is being shared.

3 Key Informant Interviews



When you see this graphic in the CHA, primary data from our key informant interviews is being shared.

WHAT INFLUENCES HEALTH?

The County Health Rankings Model

The factors that influence health outcomes are broken down into four categories in the *County Health Rankings Model*. Each category is given a percentage based on how much the factors within that category impact our health.

About **40%** of an individual's health can be attributed to **Social and Economic Factors**, **10%** to **Physical Environment**, **30%** to **Health Behaviors**, and **20%** to **Clinical Care**.

County Health Rankings & Roadmaps (CHR&R),
a program of the University of Wisconsin
Population Health Institute



**Social and
Economic Factors**
40%



Education
Employment
Income
Family & Social Support
Community Safety

**Physical
Environment**
10%



Air & Water Quality
Housing & Transit

Health Behaviors
30%



Tobacco Use
Diet & Exercise
Alcohol & Drug Use
Sexual Activity

Clinical Care
20%



Access to Care
Quality of Care

Social Determinants of Health Healthy People 2030

QUESTION FOR YOU...

FIVE ZIP CODES

53209 Glendale, Brown Deer, River Hills

53211 Shorewood, Whitefish Bay, Glendale

53212 Glendale

53217 Bayside, Fox Point, Glendale,
River Hills, Whitefish Bay

53223 Brown Deer

53217 includes only residents from North Shore communities. The other four zip codes cross borders and include residents from the City of Milwaukee. The 53212 zip code is primarily City of Milwaukee and is not included in North Shore zip code data throughout this report.



7.5



At time of
interview
(2022)

2 interviewees increased their rating

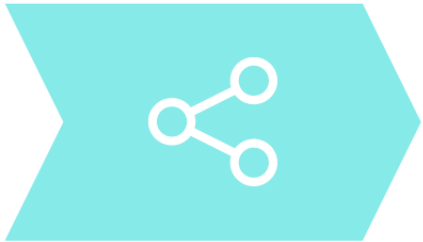
**2 interviewees only provided one of the two ratings. These ratings were included in the averages.*

When asked what factors contributed to the change in rating...



NEXT STEPS

1 - Share the CHA with the public, stakeholders, partners, etc.



- Website
- e-Newsletter
- Social media
- QR code flyers at events

2 - Community Conversations



- People living in apartments
- Black community
- Hmong community

3 - Select potential Priority Areas for our Community Health Improvement Plan (CHIP)



Use CHA data and community conversations to select potential priority areas for our CHIP

4 - Share results of community conversations and potential priority areas with stakeholders



Selection of final priority areas at:

- BOH meeting in August
- Village Managers meeting
- Other stakeholder meetings

5 - Create CHIP report with selected priority areas, goals & strategies



Public Health Preparedness

- Entering a new budget period July 1, prepping now
 - Attended the NACCHO Preparedness Summit in ATL at the end of April
 - **Best take away for Becky:** the concept of One Health: an approach that recognizes that the health of people is closely connected to the health of animals and our shared environment.
 - One Health conceptually has become more important in recent years, as many interactions have changed between people, animals, plants, and our environment.
 - According to CDC, 3 out of every 4 emerging infectious diseases in people come from animals (influenza in animals, vector-borne disease, antibiotic resistance)
-

PHEP Continued...

- **Best take away for Kayla:** Shifting the focus of preparedness to environmental health and climate change related events and disasters.
 - Public Health Emergency Preparedness (PHEP) Cooperative Agreement - funding for state, local, and territorial public health departments
 - **2019-2024 Cooperative Agreement**
 - “anthrax” is mentioned 29 times
 - “environmental health” is mentioned 1 time
 - “climate change” is mentioned 0 times
-

HARM REDUCTION AND PREVENTION VENDING MACHINES

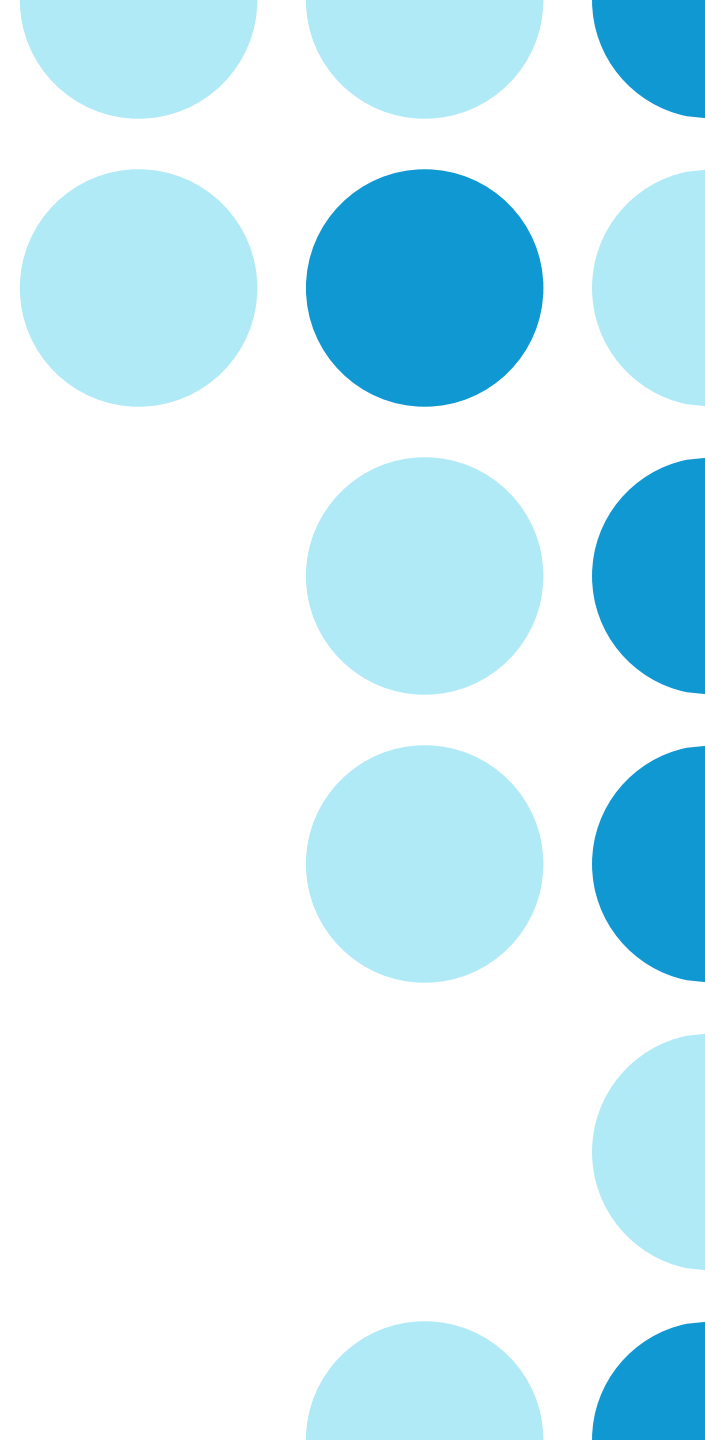


Program Updates: Overdose to Action

- On 5/15, Becky interviewed with Milwaukee County (phase II) to get one 25 harm reduction vending machines.
 - Applied for one in Brown Deer
- Recently attended the WI OFR Summit and learned about best practices for OFR around the state
- Exploring re-grant options from Milwaukee County as well and would like to add a case manager that works in conjunction with NSFR. NOFO in June
- Narcan distribution is going great – trained over 30 people recently
- Health Education Series: Narcan education, training, and distribution in some NS schools – will continue working on this!
- Supported the application of a DHS Narcan and fentanyl test strips Leave Behind Program. Moved to phase II
- State over contracted for OFR dollars, NSHD had to give back 12K.
- Please consider joining our Opiate Fatality Review!

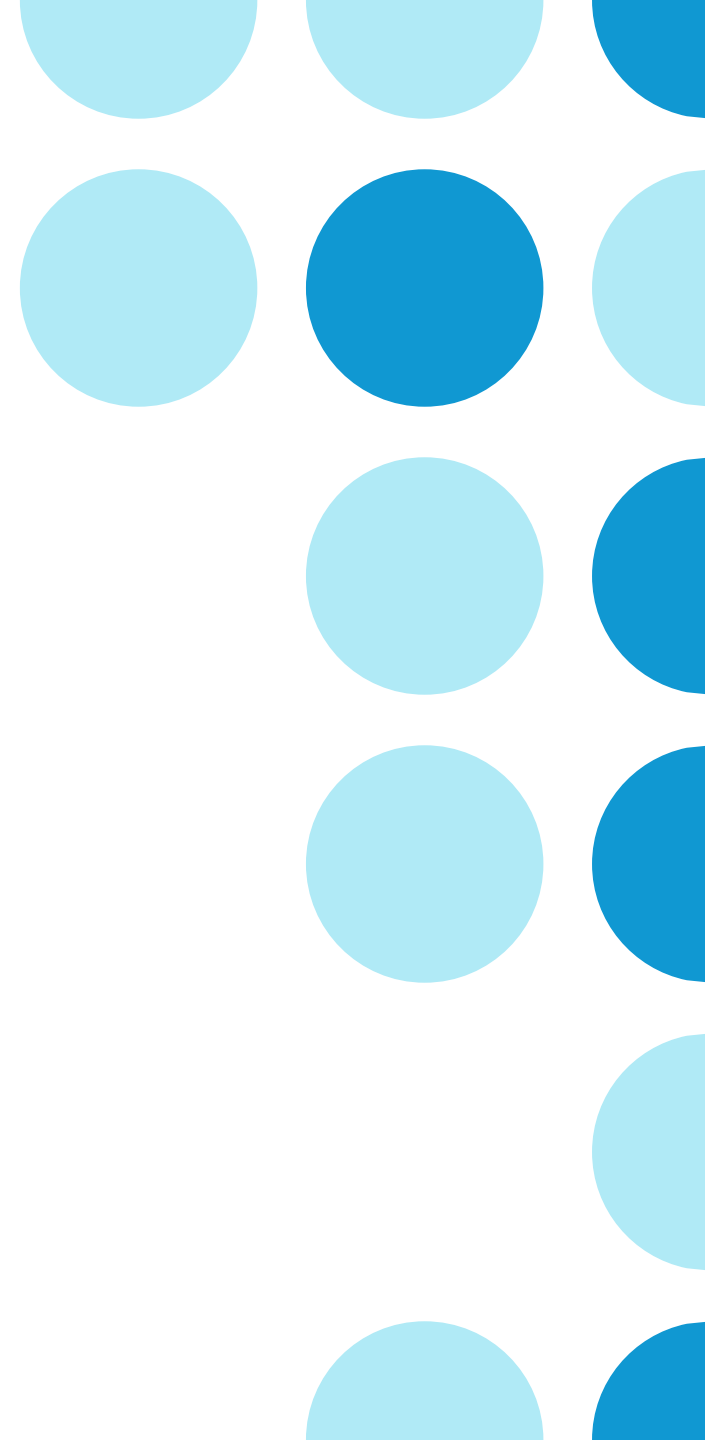
Workforce Development

- Made great progress on the NSHD Strategic Plan – we are still in a cycle, so we are ahead of the curve.
 - Brad (re-cert) Certified Pool Operator (CPO)
 - Becky on state Policy and Advocacy Committee – learning so much about WI
 - Joey continues to pursue disease intervention training and the New to Public Health Residency Program
 - Joey is currently at the Immunize Wisconsin Conference
 - Tanya attended the RX and Illicit Drug Summit
 - Becky attended the Opiates, Stimulants & Trauma Summit
 - Kayla attended the National Vital Death Reporting System (NVDRS) conference here in Milwaukee – it was the first ever NVDRS conference in celebration of 20 years of the NVDRS.
-



Workforce Development

- Becky and Brad to WPHA next week
 - Becky completed re-cert for CPR
 - Chris has completed extensive training on TB and infectious disease surveillance
 - Off-boarding 2 amazing interns this week.
 - Currently have an outstanding intern through the summer and will bring 1 new PHN intern, 1 health communications intern, and 1 AHEC (med student) intern in June!
-



Building Updates

- Asbestos abatement was more \$ than expected
 - NSFR applied for additional CDBG funds, which was successful
- Demolition started Monday 5/22
- Only slightly off schedule
- WE Energies didn't issue the utility termination notice until today which is required to tear it down – now next Monday is the day.



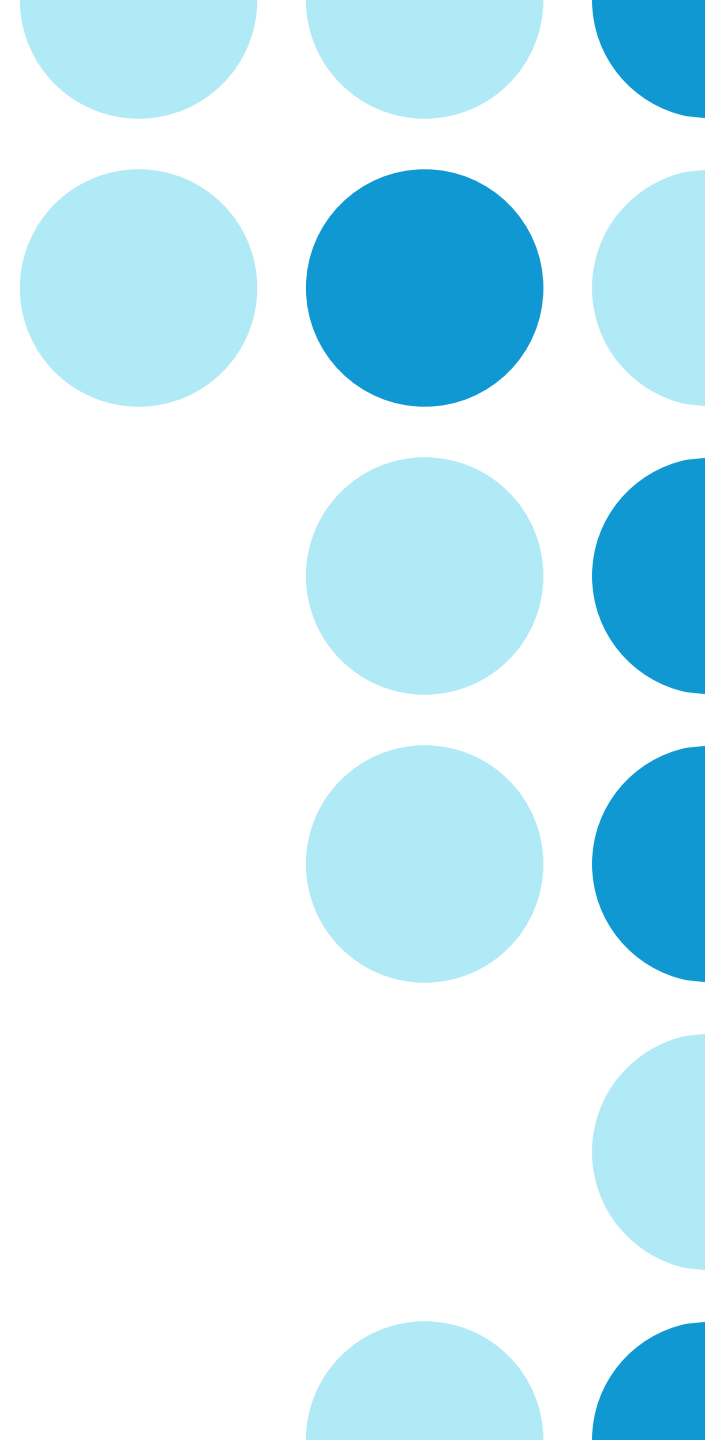
Next Steps

May 2023

- Demolition
- Prep building pad
- Begin foundation

Crucial timeline: ~~June 2023~~ August 2023

- Connect eater, sanitary sewer, storm sewer, gas, electric
 - Erection of the pre-cast walls
-



NSHD 140 Review: June 16th, 2023



Current format is a 3-hour interview and review of the following:

- Annual reports
- Board of Health meets quarterly
- Community Health Assessment (aka Community Health Needs Assessment)
- Community Health Improvement Plan
- Local Health Officer meets qualifications
- Q&A with the Team

140 Review Cont...

- Becky is consulting and planning with other LHDs who have recently had or have their 140-review coming soon.
- Working on new versions of required documentation
 - Almost totally completed
 - Wrapping up the strategic plan
- Have any BOH members participated in the past or have interest?



Student and Internship Updates

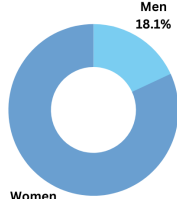
- North Shore Health Department Internship Program
 - Spring 2023 Interns – off boarding
 - Public Health Intern: Lydia
 - Public Health Nurse Intern: Afi
 - Summer 2023 Interns
 - Public Health Communications Intern
 - Public Health Nurse Intern
 - AHEC – Area Health Education Center
-

COMMUNICATIONS

WRITTEN COMMUNICATIONS

49 Weekly Email Healthy Highlights
4 Quarterly Digital Newsletters
12 Monthly Reports
12 Articles written for local village magazines

On Facebook, 81.9% of our followers are women and 18.1% are men



SOCIAL MEDIA REACH AND ENGAGEMENT

2600 Social Media Followers
2100 Number of Posts
437K Total Post Reach
437K Post Reach Across Networks
3.1K Link Clicks
673 Post Shares

Whitefish Bay and Shorewood have the highest number of people interacting with our social media.

COMMUNITY EVENTS

4 Farmers Markets
2 Community Health Series
2 Night Out Events
6 Community Bike Rodeos

Facebook, Instagram, and Twitter are our most used social media platforms



NORTH SHORE HEALTH DEPARTMENT | 2022 ANNUAL REPORT

16

Internship Projects

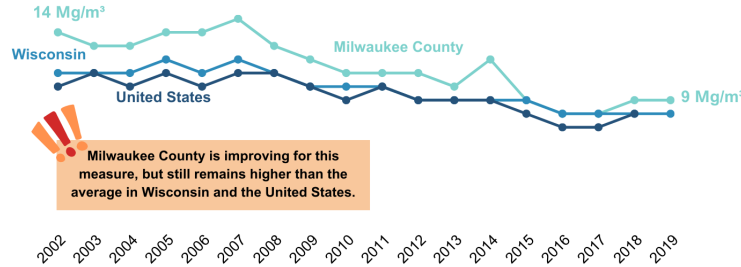
PHYSICAL ENVIRONMENT

The places people live, work, play and pray have a huge impact on their health.

Air Quality

Air Pollution- Particulate Matter

Average daily density of fine particulate matter in micrograms per cubic meter (PM2.5). In Milwaukee County, an annual average of 9.0 micrograms per cubic meter of fine particulate matter was measured in the air. The Environmental Protection Agency (EPA) has primary annual average standards of 12.0 micrograms per cubic meter.



Milwaukee County is improving for this measure, but still remains higher than the average in Wisconsin and the United States.

Air Pollution - Particulate Matter | County Health Rankings & Roadmaps



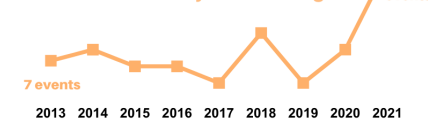
The American Lung Association (ALA) assigns grades A-F to counties (A=1; B=2; C=3; D=4; E=5; F=5), based on average annual number of days that particle pollution levels exceeded U.S. standards during the three-year measurement period. **In the measuring period between 2018 and 2020, Milwaukee County received an "A".**

Source: State of the Air | American Lung Association

Extreme Heat Events

Extreme heat events are a model-based estimate and defined by a minimum of **two consecutive days** in which the daily maximum temperature exceeded the 90th percentile threshold.

The number of extreme heat events in Milwaukee County is increasing



National Environmental Public Health Tracking Network Data Explorer (cdc.gov)

Water Quality

Drinking Water Violations

No community water system in Milwaukee County reported a health-based drinking water violation in 2020.

Drinking Water Violations | County Health Rankings & Roadmaps

- Reports
 - Monthly and Annual
- Community Health Assessment support
 - Transcribing, social media, report
- Communications, Social media, and graphics
 - Healthy Highlights, magazine article
 - Monthly social media
- [PH600 Integrative Learning Experience project \(dashboard\)](#)



Reflections and Looking Forward

- Importance of workplace values
- Ability to be creative
- Great learning experience
- Network and relationship building

Graduate school in the fall!

Status Update: Health Officer 2023 Goals

- Develop a transition plan to close BD & SW; move to Glendale
 - Explore/pursue a social work position in the NS
 - Plan to apply for opiate settlement re-grant funds when NOFO released in June
 - Ensure program visibility in all 7 NS communities
 - Summer event season
 - Vaccine clinics and outreach
 - Assess the workload of the PHNs
 - Ongoing, but seemingly great. Transitioning out our LTE PHN with the end of COVID
 - Joey (PH Specialist) took over VFC
 - Beach testing moving to environmental health
 - OFR moved to PH Strategists
 - Animal Bites moved to EH
 - Collaborate more often with HR
 - Resolve ongoing human health hazard cases
 - 95% complete!
 - Pursue new funding options
 - Got a Leave Behind Narcan Grant
 - CDBG
 - Moved Forward in PH Vending Machine Project
 - Narcan Direct
 - Increased Beach Testing funding
-