



NORTH SHORE
HEALTH DEPARTMENT

ANNUAL REPORT 2022

**Serving the
communities of
Bayside, Brown
Deer, Fox Point,
Glendale, River
Hills, Shorewood,
and Whitefish
Bay in Wisconsin**

TABLE OF CONTENTS

A Message from our Health Officer	1
Overview of NSHD	2
NSHD Updates	3
Communicable Disease Control and Prevention	4
Sexually Transmitted Infections (STIs)	5
Animal Bites & Rabies Control Tuberculosis Screening & Management	6
Immunizations	7
COVID-19 Response	8
North Shore Vital Statistics: Births & Deaths	9
Overdose Fatality Review	10
Environmental Health	11-12
North Shore Environmental Health Consortium	13
Priority Areas	14
Additional Highlights	15
Communications	16
Partnerships	17
Focus Areas for 2023	18
Staff, Locations, and Hours	19



A MESSAGE FROM OUR HEALTH OFFICER

Dear North Shore Residents, Partners, and Friends,

I am so pleased to present the North Shore Health Department's 2022 Annual Report celebrating the excellent work completed by the department in the last 12 months. On behalf of the Board of Health, I'd like to offer a heartfelt **THANK YOU** to our incredibly dedicated team, and highlight their unrelenting pursuit of ensuring the health, safety, and strong partnerships, both public and private, within the seven North Shore communities.

For NSHD, 2022 was a year of reconciliation and reexamination of our organization. In the wake of the COVID-19 pandemic, the NSHD grew and intentionally recentered upon our role as the North Shore's Chief Health Strategist. We conscientiously tailored programs to the emerging needs of our constituents, convened and contributed to coalitions, partnered with diverse sectors, strived to move our work further upstream, and used data to guide this practice.

As we look forward, **YOUR** NSHD is driven to continually identify and implement public health best practices that will improve the physical and mental health and safety of the North Shore. In 2023, we will continue to uphold equitable approaches and design our programs for those in the margins—the best way to ensure we reach everyone living in the North Shore.

So, it is with sincere gratitude and renewed optimism that we look forward to a year of continual growth, enriched partnerships, and the North Shore being Wisconsin's healthiest community.

Becky Rowland, MPH, MBA
North Shore Health Department
Health Officer

OVERVIEW OF THE NORTH SHORE HEALTH DEPARTMENT

Mission

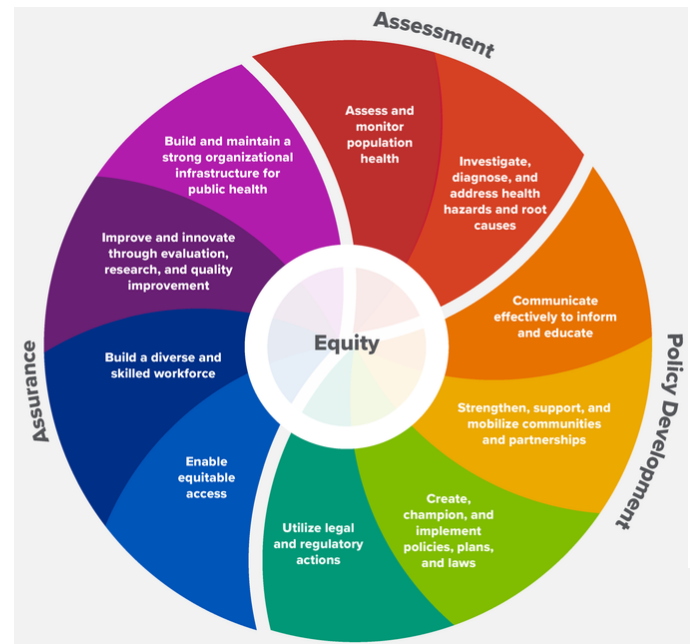
The mission of the North Shore Health Department (NSHD) is to work in partnership with the communities we serve to assure, promote and protect the health and safety of the people in the North Shore. NSHD provides public health services for the seven Wisconsin communities of Bayside, Brown Deer, Fox Point, Glendale, River Hills, Shorewood and Whitefish Bay, with a total population of approximately 67,695 according to the 2020 U.S. Census.

The North Shore Health Department has two offices located in Brown Deer and Shorewood. Residents can utilize services at either location. NSHD is advised by a Board of Health comprised of representatives from each of the seven communities in the North Shore, along with a medical advisor. The Village of Brown Deer serves as the fiscal and administrative agent for NSHD.

Centers for Disease Control and Prevention

Public Health Essential Services for Health Departments

The 10 Essential Public Health Services provide a framework for public health to protect and promote the health of all people in all communities. To achieve equity, the Essential Public Health Services actively promote policies, systems, and overall community conditions that enable optimal health for all and seek to remove systemic and structural barriers that have resulted in health inequities. Such barriers include poverty, racism, gender discrimination, ableism, and other forms of oppression. Everyone should have a fair and just opportunity to achieve optimal health and well-being.



CDC - 10 Essential Public Health Services - CSTLTS

NORTH SHORE HEALTH DEPARTMENT UPDATES

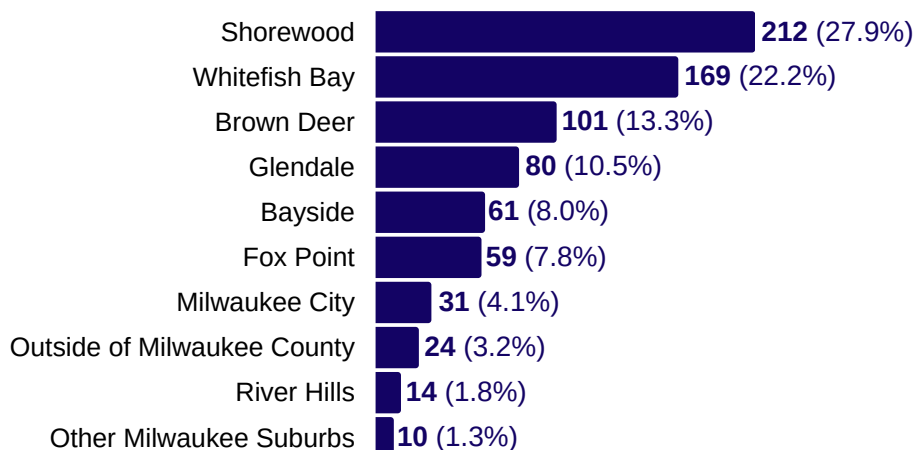
North Shore Health Department Strategic Plan

A Strategic Plan is a realistic, achievable and practical plan that turns strategy into actions over the course of 3 to 5 years. In 2022, we began updating our Strategic Plan to redefine our mission, vision, and values and to set new goals as a department. We also participated in completing a SWOT analysis, an evaluative process that identifies priorities and helps build a strategic plan by analyzing strengths, weaknesses, external opportunities and threats. Our previous strategic plan spanned from 2016-2019.

Community Health Assessment (CHA) and Community Health Improvement Plan (CHIP)

In 2022, the North Shore Health Department began another Community Health Assessment (CHA), which will inform the creation of the next Community Health Improvement Plan (CHIP). For the CHA, we conducted a community survey from May 2022 to September 2022 to get feedback from the public on the most critical health issues in the North Shore. We received a total of 771 responses from community members. We also interviewed 57 key informants to gain insight on health concerns in the North Shore from the perspectives of community leadership, school leadership and staff, healthcare providers, police departments, North Shore Fire & Rescue, and more. Final results from our CHA will be released in May 2023. Leading up to this release, some of the key results will be shared on our social media and website.

Number of survey respondents by community



COMMUNICABLE DISEASE PREVENTION AND CONTROL

A communicable (or infectious) disease is an illness transmitted through direct contact with an infected individual or animal - or indirectly through contact with a vector, such as a mosquito, tick, or plant, with blood or bodily fluids, or by breathing in an airborne virus or bacteria. As part of Wisconsin State Statute, 252 - Communicable Diseases, local health departments are required to follow up and respond to all Category I and II diseases and conditions considered to have significant public health impact. North Shore Health Department investigates all suspect, probable and confirmed cases of reportable communicable diseases to prevent and control the spread of disease in the community.

Disease Cases

Confirmed and Probable cases of disease

Count of cases by disease category

Excluding COVID-19

	2021	2022
Food or Water-borne illness	35	49
Hepatitis - A, B, C	23	20
Mycobacterium - non-TB	37	21
Vaccine Preventable*	<5	5
Sexually Transmitted Infections**	358	347
TB - Active	0	<5
TB - Latent	15	22
Vector-borne (mosquito & tick)	5	6
Influenza Hospitalization	<5	29
Streptococcus	8	8
Fungal	<5	<5
Other	11	12
Total Cases	494	522

*Pertussis, Varicella (chicken pox), Mumps, etc.

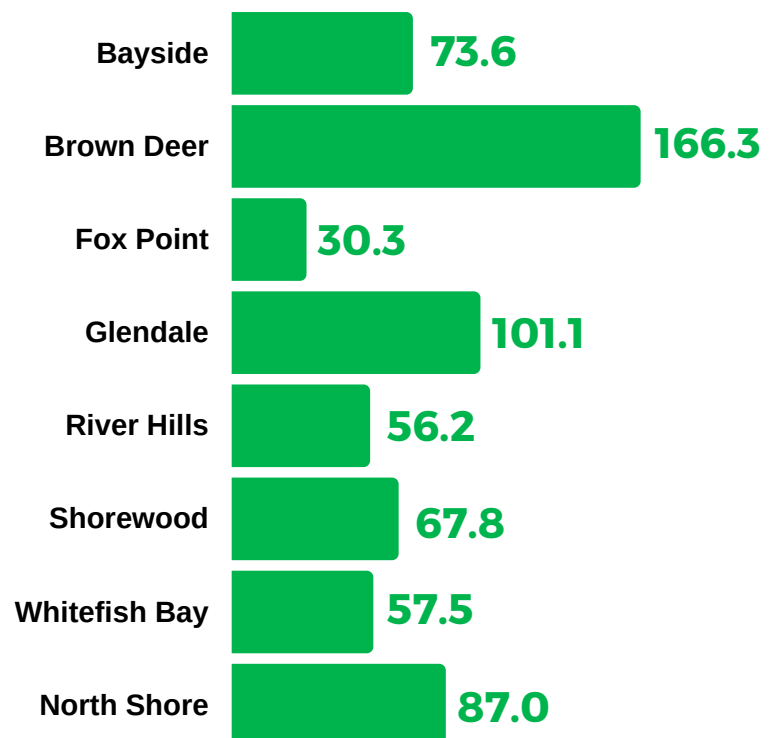
**Chlamydia, Gonorrhea, Syphilis

Disease Investigations

Confirmed, Probable and Suspect cases of disease

Rate per 10,000, by community

Excluding COVID-19



Sexually Transmitted Infections (STIs) accounted for 66.5% of all cases of disease in the North Shore in 2022. Food and water-borne diseases were the second highest at 9.4%.

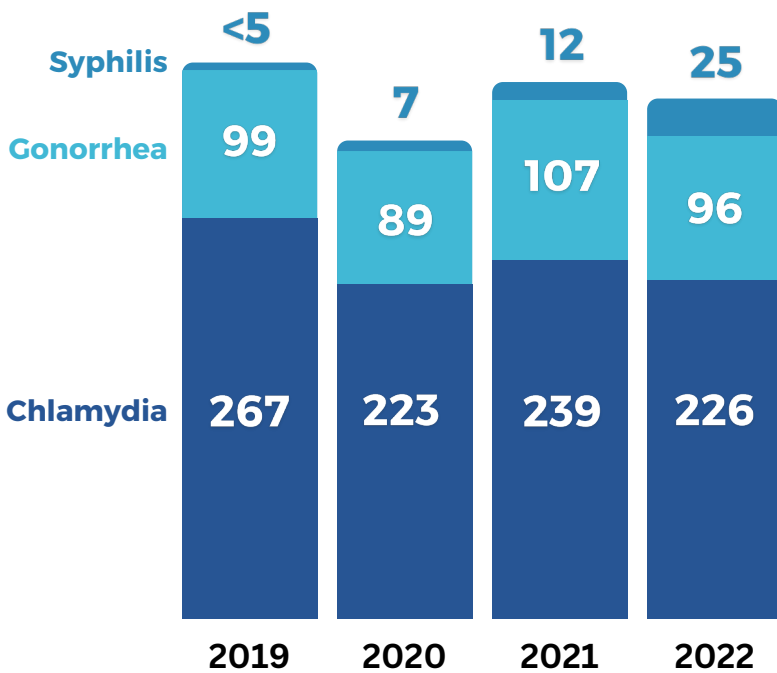
Data Source: WI Electronic Disease Surveillance System (WEDSS)

Sexually Transmitted Infections (STIs)

Sexually Transmitted Infections (STIs) are Category II reportable diseases that require monitoring and investigation by local health departments. There are five reportable STIs in Wisconsin, with chlamydia and gonorrhea being the two most prevalent. Public Health Nurses conduct interviews with confirmed cases of reportable STIs to assess if patients have been appropriately treated and assure notification has taken place with their partner(s). Chlamydia is the most commonly reported STI in Wisconsin and the North Shore, and gonorrhea is the second most commonly reported.

STIs in the North Shore, by year

Confirmed and Probable cases of Chlamydia, Gonorrhea, Syphilis



North Shore STI rates, 2022

Syphilis

3.7

per 10,000

compared to 1.8 in 2021

Gonorrhea

14.2

per 10,000

compared to 15.8 in 2021

Chlamydia

33.4

per 10,000

compared to 35.3 in 2021

Sexual & Reproductive Health Initiatives

Made condoms available at both of our offices and in the public restrooms in our Brown Deer office building. Distributed condoms at community outreach events.

Promoted Human papillomavirus (HPV) vaccination at back-to-school clinics.

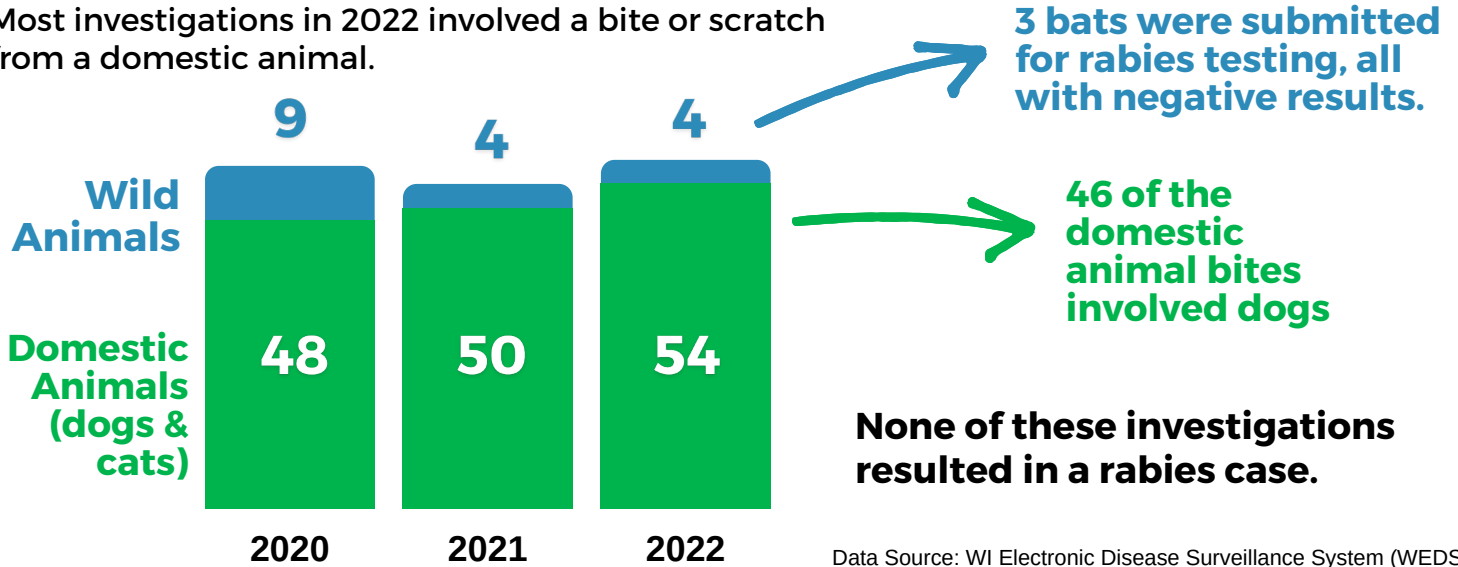
Followed up with individuals who received a positive STI test to provide education and ensure treatment was completed.

Animal Bites & Rabies Control

The North Shore Health Department works with police departments in the North Shore to promptly investigate animal bites for potential rabies exposure. The Health Department is responsible for ensuring that the biting animal is appropriately and legally isolated, observed, and tested for rabies. Investigations can involve human or animal bite victims. NSHD also assists with testing of wild animals, such as bats, which may have come in contact with humans or domestic animals.

There were 58 total animal investigations in 2022 in the North Shore

Most investigations in 2022 involved a bite or scratch from a domestic animal.



Tuberculosis Screening & Testing

42 Tuberculin Skin Tests (TSTs)

administered by NSHD Public Health Nurses

Although many educational programs have moved away from requiring a Tuberculosis skin test (TST), some still require it. Since TSTs require nurse administration and reading, many clinics no longer provide these inexpensive tests, opting to only do the more costly blood tests to assess for TB exposure. NSHD provides this hard to find service for a nominal fee to students and teachers in a variety of programs, including healthcare and education.

Tuberculosis Case Management

NSHD receives notification of positive Tuberculosis tests through the Wisconsin Disease Surveillance System (WEDSS). Tuberculosis is caused by the bacteria *Mycobacterium tuberculosis*. The bacteria can cause Active Tuberculosis (TB), which is typically an infection in the lungs and can be spread to others, as well as Latent Tuberculosis Infection (LTBI), which cannot be spread but may develop into Active TB if not treated with antibiotics. In 2022, we provided case management for 22 LTBI cases, including providing Directly Observed Therapy (DOT) at our office for a handful of those cases.

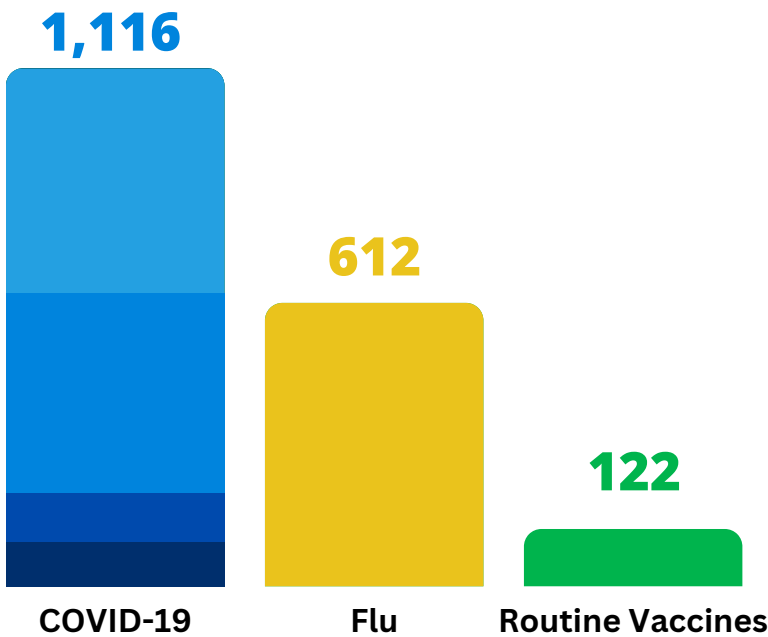
Immunizations

The North Shore Health Department maintains an immunization program to prevent and control vaccine-preventable diseases. Under this program, NSHD provides immunizations to residents without medical insurance and to those whose insurance does not cover immunizations. We offer immunization clinics at both of our offices, and work with families, schools and daycare providers to ensure enrolled children are up-to-date on their immunizations and compliant with the Wisconsin Student Immunization Law.

In 2022, 75 percent of children in the North Shore aged 24 months had all required vaccinations (HepB, DTaP, Hib, PCV13, Polio, MMR and Varicella) and 74 percent of children aged six had all required vaccinations, according to Wisconsin Immunization Registry data.

In 2022, NSHD administered 1,850 vaccinations, with 60% of them being COVID-19 vaccines.

■ 6M-4Y ■ 5-11Y ■ 12+ ■ Bivalent ■ J&J



The **annual flu vaccine made up 33%** of all vaccines given by NSHD and **routine vaccines made up 7%**.

Routine vaccines include those required for school (DTaP, Tdap, Polio, MMR, Varicella, HepB), HPV, and meningococcal.



In August 2022, NSHD held a Back To School Clinic at Brown Deer Middle/High School that coincided with school registration. We vaccinated numerous students who were either behind or unvaccinated for school required vaccines.

During the month of October, NSHD held clinics for a total of 18 days, resulting in 23 different clinics being offered.



COVID-19 RESPONSE

COVID-19 Cases by community

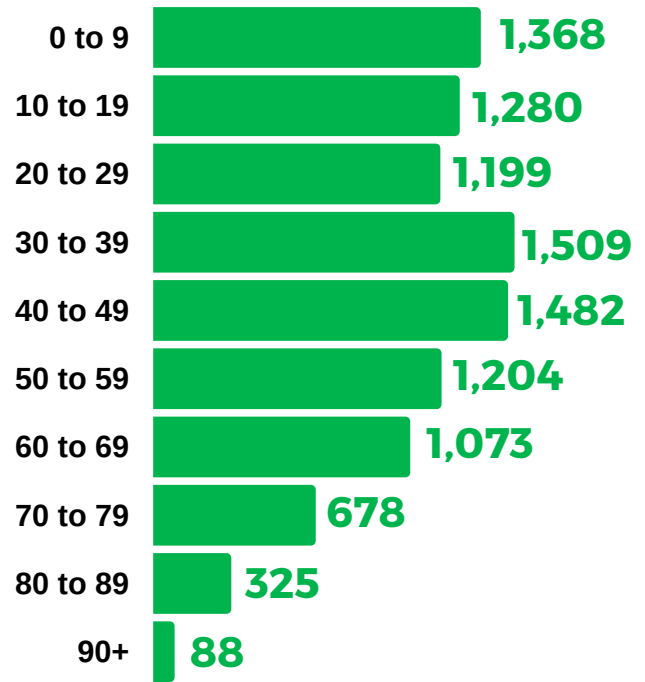
Includes Confirmed (PCR) & Probable (Antigen) cases

	Number	Rate per 10,000
Bayside	714	1,593.0
Brown Deer	1,789	1,430.4
Fox Point	1,145	1,651.3
Glendale	2,116	1,584.2
River Hills	241	1,504.4
Shorewood	2,119	1,529.0
Whitefish Bay	2,082	1,392.3
Total	10,206	1,507.6

COVID-19 Cases by age

Includes Confirmed (PCR) & Probable (Antigen) cases

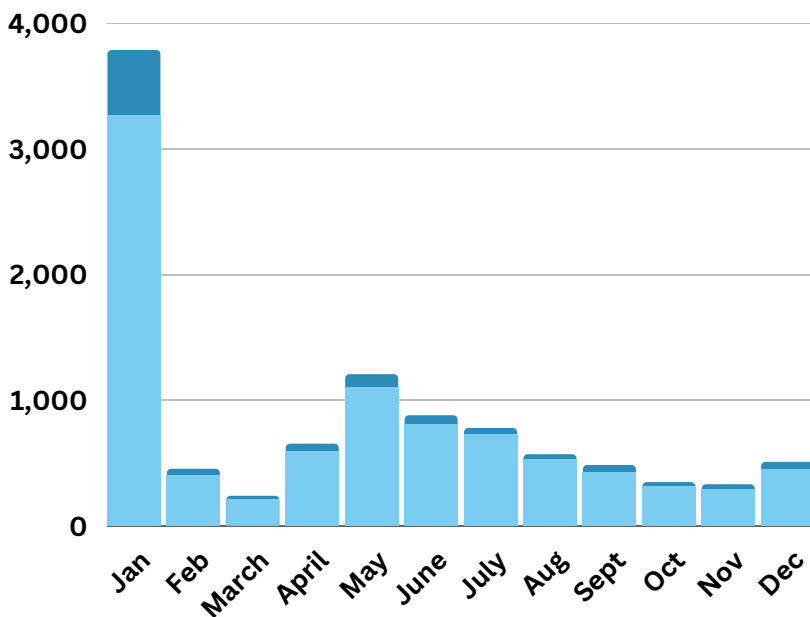
Case counts by age group (years)



Data Source: WI Electronic Disease Surveillance System (WEDSS)

COVID-19 Cases by month

January 2022 was the end of a large spike in cases following the holidays. Of our 10,206 cases in 2022, 3,784 of them were in January.



In 2022, we received notification of 10,206 positive COVID-19 cases in the North Shore, which is a 48% increase from the 6,897 cases we received in 2021. At-home test usage increased in 2022 and these tests are not reported or tracked, making it difficult to get an accurate picture of the true COVID-19 burden. During 2022, we switched our follow-up process and only conducted outreach to positive results among children and older adults (70+). We continued to provide guidance around isolation, quarantine and contact investigations to schools, childcare centers and long-term care facilities.

Data Source: WI Electronic Disease Surveillance System (WEDSS)

NORTH SHORE VITAL STATISTICS

Deaths*

Leading causes of death in the North Shore according to primary cause of death indicated on the death report

	2021	2022	2022 mortality rate per 10,000
Cancer	98	124	18.3
Heart Disease	91	108	16.0
Unintentional Injuries	43	29	4.3
Stroke (Cerebrovascular Diseases)	23	25	3.7
COVID-19	36	23	3.4
Alzheimer's Disease	17	20	3.0
Chronic Lower Respiratory Disease	18	13	1.9
Assault (Homicide)	<5	11	1.6
Nephritis	7	10	1.5
Parkinson Disease	<5	8	1.2
Chronic Liver Disease & Cirrhosis	6	8	1.2
Diabetes Mellitus	9	7	1.0
Suicide	6	7	1.0
Hypertension	9	7	1.0
All Other	124	151	22.3
Total Deaths, All Causes	501	551	81.4



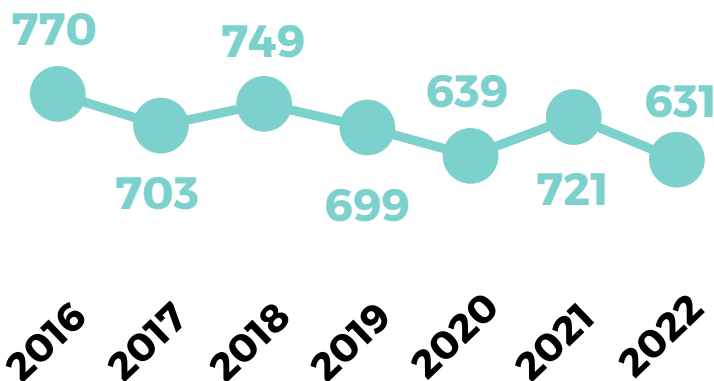
WHAT IS MORTALITY RATE?

A mortality rate is the number of deaths due to a disease divided by the total population. In the North Shore, there were 124 cancer deaths in 2022 in a population of 67,695. The cancer mortality rate for the North Shore population is 18.3 per 10,000.

Source: Vital Records, State of Wisconsin, 2021-2022
North Shore Total Population = 67,695 according to 2020 U.S. Census

*Death data are estimated from preliminary death certificates

Births



NEWBORN NOTIFICATIONS

We receive reports when new babies are born in our jurisdiction. A letter is sent to the new parent(s) congratulating them on the birth of their baby and letting them know how we can support them. Lactation consultations are offered by our staff, as well as guidance on other topics as requested by the parent(s).

Source: Vital Records, State of Wisconsin, 2016-2022
*Death data are estimated from preliminary birth certificates. As additional reports come in, the data will change.

OVERDOSE FATALITY REVIEW TEAM

A locally based, multi-disciplinary process for understanding the risk factors and circumstances leading to fatal overdoses and identifying opportunities to prevent future overdoses. **The basis of OFR - like all fatality reviews - is that overdose fatalities could have been prevented with the right action, timing, intervention, and/or response.**

-Medical College of Wisconsin, Wisconsin & Milwaukee County OFR Teams

Wisconsin OFR
Overdose Fatality Review



The North Shore Health Department is part of the Milwaukee County OFR team and also conducts additional reviews specific to overdose fatalities that occur in the North Shore.

In 2022, we hosted three OFR meetings and reviewed six overdose fatalities that occurred in the North Shore. Local partners that attended the meetings include local police departments, North Shore Fire/Rescue, Medical College of Wisconsin, and the Milwaukee County Medical Examiner's Office.

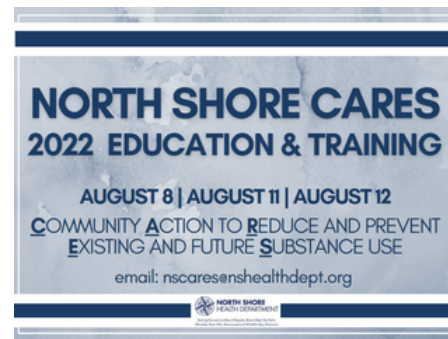
We presented two cases and spoke about our August 2022 training with other OFR teams around the State.

OFR RECOMMENDATIONS

As part of case review, the team identifies community substance use prevention and harm reduction recommendations to implement, **completing three recommendations in 2022.**

TRAUMA-INFORMED CARE EDUCATION AND TRAINING FOR FIRST RESPONDERS

Through trauma informed care practices, individuals can better understand how trauma may affect an individual's life or response to an event or situation. In collaboration with North Shore Fire/Rescue and WellPoint, Inc., training was held in August 2022 for 89 attendees composed of first responders, fire/rescue and law enforcement. Milwaukee Overdose Response Initiative (MORI) and Milwaukee County Office of Medical Examiner also presented.

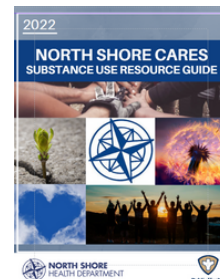


COMMUNITY NARCAN (NALOXONE) ACCESS, TO HELP FIGHT THE OPIOID EPIDEMIC AND SAVE LIVES.

Three staff members became NARCAN Trainers and NSHD became a Wisconsin Department of Health Services NARCAN DIRECT approved site. NSHD staff can train and distribute NARCAN/naloxone to community members.

UPDATED NORTH SHORE SUBSTANCE USE RESOURCE GUIDE.

Our comprehensive substance use resource guide provides residents with local, state and national level resources, as well as more in-depth education around drugs and substances. A print copy is available at our Brown Deer office and also via our website, **200 copies of the 2022 guide were distributed to the public and partner agencies.**



ENVIRONMENTAL HEALTH

Wisconsin DHS Lead-in-WTR (Water Testing and Remediation) Initiative

8 Total sites sampled in 2022

What is the Lead-in-WTR Initiative?

The goal is to reduce lead hazards in early child care centers and early Head Start programs across the state. This program tests water at the centers for lead and helps centers take action through faucet replacement and non-potable water signage.

Our department has conducted the most testing out of all Lead-in-WTR grantees in the state of WI. Testing has continued into 2023.

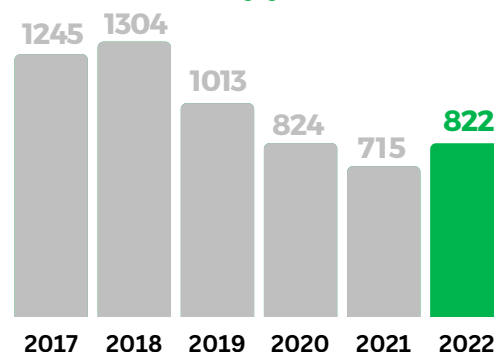
Lead Level Screening

Children 6 years and younger blood lead level results received by NSHD **746 children**
822 samples

Children w/ initial screening ≥ 5.0 mcg/dL **13 (1.7%)**

Children w/ confirmatory screening ≥ 5.0 mcg/dL **6 (0.8%)**

Number of blood lead level test results in the North Shore, by year



Data Source: Healthy Homes and Lead Poisoning Surveillance System (HPLPSS)

Radon Testing

of Radon Test Kits Sold by NSHD **18**

of Radon Test Results Received for North Shore Municipalities **15**

Test Result	% of Tests
<4pCi/L	60%
4-7 pCi/L	26.67%
8-19.9 pCi/L	6.67%
> 19.9 pCi/L	6.67%

Beach Water Testing

Water samples collected **84**

Elevated bacteria level - Advisory **4**

Klode 3
Atwater 1
Doctor's Park 0

Beach Closures - high bacterial level **3**

Klode 1
Atwater 1
Doctor's Park 1

Status posted on dnr.wisconsin.gov/topic/Beaches from Memorial Day through Labor Day.

ENVIRONMENTAL HEALTH

Habitability Investigations

19 Habitability concerns

were reported in 2022

Several of these investigations have continued into 2023.

NSHD follows up on concerns of habitability and potential human health hazards, including older adult neglect concerns, hoarding, and unsafe living conditions, like lack of access to potable water or presence of hazardous substances. Reports typically come to us after North Shore Fire and Rescue (NSFR) is called to a home, or through concerns from neighbors. A majority of these investigations involve older adults who are experiencing difficulty taking care of themselves or their property. Through collaboration between our department, the village and police department of which the residents live, and other partners, human health hazards

Environmental Complaints

8 Environmental concerns

were reported in 2022

Complaints involved vermin, waste, air quality, heating, and painting practices. Our Environmental Health Specialists and Health Officer investigate complaints to assess how the situation can be resolved and connect individuals with resources.



Per Wisconsin State Statute, Chapter 254.59...

...local health departments are required to respond to the presence of human health hazards. Human health hazards are substances, activities or conditions that are known to have the potential to cause acute or chronic illness, injury or death if exposure is not abated. Local municipal ordinances also give NSHD authority to investigate and respond to public health nuisance complaints.

Municipal Codes for Human Health Hazards and Public Health Nuisances

- Bayside: Ch 32 Sec 22
- Brown Deer: Ch 38 Sec 3
- Fox Point: Ch 630 Sec 8
- Glendale: Title 8.1.9
- River Hills: Ch 18 Sec 18.08
- Shorewood: Ch 389
- Whitefish Bay: Ch 10 Sec 49

NORTH SHORE ENVIRONMENTAL HEALTH CONSORTIUM

360 TOTAL LICENSES
469 TOTAL INSPECTIONS
46 NEW LICENSE INSPECTIONS
69 RE-INSPECTIONS
12 COMPLAINTS

Source: Wisconsin HealthSpace



The North Shore Health Department oversees the North Shore Environmental Health Consortium (NSEHC), which serves as an agent of the Wisconsin Department of Agriculture, Trade, and Consumer Protection (DATCP). The NSEHC protects the public's health through enforcement of sanitary regulations and fostering sanitary practices in certain public establishments. The NSEHC provides licensing and inspection services for restaurants, retail food establishments, temporary food vendors, pools and hotels.

In 2022, the NSEHC was able to retain additional inspection help by hiring another full time Sanitarian. The new Sanitarian will assist in issuing licenses and completing inspections. With the additional help, the NSEHC intends to continue expansion by taking on additional Environmental Health programs, such as beach water testing and animal bite follow ups.



NORTH SHORE
ENVIRONMENTAL HEALTH CONSORTIUM
A Licensing and Inspection Program of the North Shore Health Department

PRIORITY AREAS

We align our work with our department's four priority areas that were established in the last Community Health Improvement Plan (CHIP) published in 2020.

01 Mental Health

Over **25** Social media posts related to mental health

- All of our staff members and North Shore Fire & Rescue (NSFR) first responders attended a trauma-informed care training hosted by our department as part of our NS CARES program. The training focused on building resiliency for handling trauma and interacting with individuals who have experienced trauma.
- Shared information about the new nationwide 988 Suicide & Crisis Lifeline. 988 is the number to call for people experiencing suicidal, mental health, and/or substance use crises. You can call or text 988.
- Attended various in-person conferences and online webinars



Over **62** Social media posts about substance use prevention and harm reduction

Substance Use 02



- Staff members attended Naloxone (NARCAN) Training through WI DHS, which made NSHD eligible for the NARCAN Direct Program, a program to distribute NARCAN and provide training to the public.
- Distributed "Signs of an Overdose" and NARCAN information cards at summer events
- Distributed Deterra drug disposal bags at various community events

03 Injury Prevention

106 Car Seat Installations

- Began the Lead-in-Water Testing and Remediation (WTR) Initiative through WI DHS to reduce lead hazards in early childcare centers
- Distributed gun locks at local farmers markets
- Developed open water swim safety and new life jacket label instructions for swim lessons, as a part of the U.S. Coast Guard/SafeKids grant
- Hosted the Stepping On Fall Prevention class with NSFR. The class covered strength and balance exercises, home hazards, safe footwear, and more.



14 Newborn Home Visits & Lactation Consultations

Blood Pressure Clinics in the community **10**

Physical Activity & Nutrition 04

- Expanded partnership with WFB Recreation to include other North Shore Park and Rec Departments in NSHD Community Health Series, focusing on health topics that matter to the community, including physical activity and nutrition
- Initiated a partnership with Brown Deer YMCA to work together to better serve those in our community
- Participated in the 2022 Village of Shorewood walk audit to assess how we can continue to maintain and improve Shorewood's walkability

ADDITIONAL HIGHLIGHTS

Additional highlights from our Monthly Reports in 2022

Our Health Officer and one of our Public Health Nurses attended the Wisconsin Public Health Association conference in Wisconsin Dells. Topics covered include: the Comprehensive Injury Center (CIC) at MCW, alcohol consumption in WI, connecting people in substance use recovery to resources, environmental health capacity, and changes to the State Health Improvement Plan (SHIP).

Attended various community events to promote our community health survey, including the Whitefish Bay Farmers Market, Fox Point Village Open House, Fox Point Farmers Market, Brown Deer Farmers Market, Shorewood Farmers Market, and National Night Out events.

Many of our staff members attended the North Shore Tabletop Exercise simulating a large tornado that crosses through multiple communities. Over 50 partners came together to discuss collaboration, coordination, and communication in the aftermath of such a scenario.



Our Senior Environmental Health Specialist presented at the Wisconsin Environmental Health Association (WEHA) conference to 152 people along with North Shore Fire & Rescue.

Our Health Officer attended the board meeting for each one of our seven municipalities to update the health department's budget formula for 2024-2031. All seven boards unanimously supported the updated formula, as well as the request for funding for a new North Shore Fire and Rescue/North Shore Health Department building project.

Submitted the final draft of our NARCAN (Naloxone) distribution policy in December for distribution in 2023.

Our team participated in an end-of-year staff retreat. We started the strategic planning process for our department to ultimately create an updated NSHD Strategic Plan. We also conducted a department-wide workforce skills assessment and created posters to hang in our office.



COMMUNICATIONS

●●● WRITTEN COMMUNICATIONS

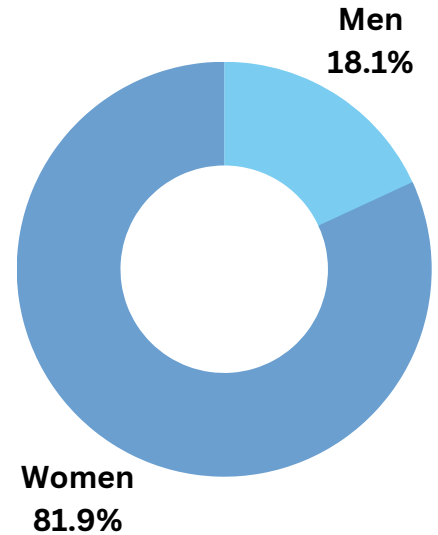
49 Weekly Email Healthy Highlights

12 Monthly Reports

4 Quarterly Digital Newsletters

12 Articles written for local village magazines

On Facebook, 81.9% of our followers are women and 18.1% are men



SOCIAL MEDIA REACH AND ENGAGEMENT

2600

Social Media Followers

2100

Number of Posts

437K

Total Post Reach

437K

Post Reach Across Networks

3.1K

Link Clicks

673

Post Shares

Whitefish Bay and Shorewood have the highest number of people interacting with our social media.

COMMUNITY EVENTS

2 Community Health Series

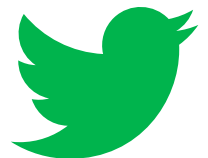
2 Night Out Events

6 Community Bike Rodeos

4 Farmers Markets



Facebook, Instagram, and Twitter are our most used social media platforms



PARTNERSHIPS

The work we do would not be possible without our valuable community partners.



LOCAL UNIVERSITIES

Cardinal Stritch University
Alverno College
University of Wisconsin - Milwaukee
School of Nursing
University of Wisconsin - Milwaukee
Zilber School of Public Health
University of Wisconsin - Madison School
of Nursing / New 2 Public Health
Acension/Columbia St. Mary's Family
Medicine Residency



HEALTHY AGING PARTNERS

Milwaukee County Falls Prevention
Coalition (MCFPC)
Shorewood Elder Services Advisory
Board (ESAB)
North Shore Dementia Consortium
Dementia Awareness Workgroup
(DAWG)



MENTAL HEALTH PARTNERS

Milwaukee County Overdose Fatality Review Board
Prevent Suicide Wisconsin
Mental Health America
Wisconsin Psychological Association (WPA)
RedGEN



NORTH SHORE AREA FIRST RESPONDERS

North Shore Fire Rescue
Bayside Police Department
Brown Deer Police Department
Fox Point Police Department
Glendale Police Department
River Hills Police Department
Shorewood Police Department
Whitefish Bay Police Department

OTHER LOCAL PARTNERS

Health Connections, Inc.
Area K-12 schools, libraries and
municipal government agencies
Wisconsin Association of Local
Health Departments and Boards

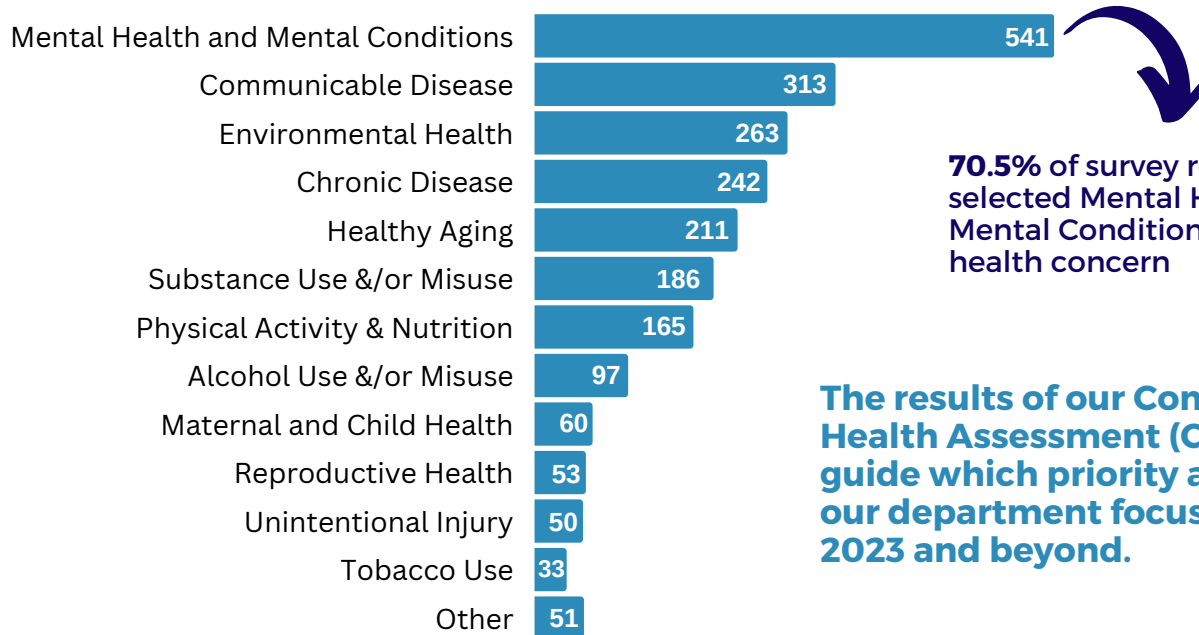
Safe Kids Coalition
Rite Hite YMCA
Milwaukee Co. Breastfeeding Coalition
Respite Care Association of Wisconsin
Sojourner Family Peace Center

NORTH SHORE HEALTH DEPARTMENT MOVING FORWARD

2023 Areas of Focus

- Social Connectedness
- Mental Health
- Substance Use Prevention & Harm Reduction
- Workforce Development
- Healthy Aging
- Community Outreach
- Partnerships & Collaboration

Mental Health, Communicable Disease, and Environmental Health were the top 3 priority areas selected in the North Shore Community Health Assessment survey



70.5% of survey respondents selected Mental Health and Mental Conditions as a top health concern

The results of our **Community Health Assessment (CHA)** will guide which priority areas our department focuses on in **2023 and beyond.**

Data from NSHD 2022 Community Health Survey. Each survey respondent was able to select three top health concerns in the North Shore. A total of 769 respondents answered this question.

North Shore Health Department (NSHD) and North Shore Fire & Rescue (NSFR) - New building project in Glendale

Fire Station 82 in the City of Glendale is being reconstructed and will be home to the North Shore fire/EMS station, administrative offices, fleet maintenance, and the North Shore Health Department. The project is expected to take approximately one year with a completion date sometime in Spring 2024.

We are looking forward to joining buildings with NSFR and anticipate an increase in collaboration between our departments in the future.



NORTH SHORE HEALTH DEPARTMENT

STAFF

Health Officer/Director - Becky Rowland, MPH, MBA
Deputy Health Officer, Senior Environmental Health Specialist - Brad Simerly, REHS
Environmental Health Specialist - Leslie Wroblewski, RDN, CD, CLC
Public Health Nurses - Heather Champagne, MPH, RN; Chris Osowski, BSN, CPN
Nurse Contractors - Karin Peterson, RN; Charles Sweatt, LPN
Public Health Strategists - Kayla Bonack, MPH; Tanya Bohacheff, MPH
Public Health Specialist - Joseph McMahon, MPH
Administrative Coordinator - Danelle Kirschling
Public Health Intern - Lydia Korthals
Public Health Nurse Intern - Afi Komi

BOARD OF HEALTH

The Board, with representatives from each of the seven communities, helps direct the Health Department's activities. In addition, a medical advisor serves on the Board of Health.

Bayside - Marisa Awodey Roberts
Brown Deer - Charonda Farrington, RN
Fox Point - Chelsea Holtz, DO
Glendale - Debesh Mazumdar, MD
River Hills - Christopher Okunseri, BDS, MSc, MLS
Shorewood - Kristine Peterka, DNP, RN
Whitefish Bay - Christopher Simenz, PhD, CSCS

Medical Advisor, Chair - Gary Lewis, MD

TWO LOCATIONS

Brown Deer Office
4800 W. Green Brook Dr.
Brown Deer, WI 53223

Shorewood Office
2010 E. Shorewood Blvd
Shorewood, WI 53211

CONTACT US

Main Phone Line: (414) 371-2980
Email: nshd@nshealthdept.org
Website: www.nshealthdept.org
Hours: 8:00 a.m. to 4:30 p.m. Mon-Fri

STAY CONNECTED

Subscribe to our quarterly newsletter at www.nshealthdept.org/Newsletter.



North Shore Health Department



NSHealthDept



nshealthdept



www.nshealthdept.org